




## Real-Time 3D Imaging and Inhibition Analysis of Various Amyloid Aggregations Using Quantum Dots

メタデータ	<p>言語: eng</p> <p>出版者: MDPI</p> <p>公開日: 2020-07-09</p> <p>キーワード (Ja): amyloidosis; amyloid <math>\beta</math>, <math>\alpha</math>-synuclein</p> <p>キーワード (En): tau, amyloid aggregation inhibitor, quantum dot, 4D-imaging</p> <p>作成者: 徳楽, 清孝, GALAQIN, Nuomin, TAINAKA, Reina, SHIMAMORI, Keiya, 倉賀野, 正弘, NOGUCHI, Taro. Q. P, 徳楽, 清孝</p> <p>メールアドレス:</p> <p>所属:</p>
URL	<a href="http://hdl.handle.net/10258/00010219">http://hdl.handle.net/10258/00010219</a>



Article

# Real-Time 3D Imaging and Inhibition Analysis of Various Amyloid Aggregations Using Quantum Dots

Xuguang Lin <sup>1</sup>, Nuomin Galaqin <sup>1</sup>, Reina Tainaka <sup>1</sup>, Keiya Shimamori <sup>1</sup>, Masahiro Kuragano <sup>1</sup>, Taro Q. P. Noguchi <sup>2</sup> and Kiyotaka Tokuraku <sup>1,\*</sup> 

<sup>1</sup> Department of Applied Science and Engineering, Muroran Institute of Technology, Muroran 050-8585, Japan; linxuguang4000@163.com (X.L.); 18041091@mmm.muroran-it.ac.jp (N.G.); teruteru\_yrs718@yahoo.co.jp (R.T.); 19041040@mmm.muroran-it.ac.jp (K.S.); gano@mmm.muroran-it.ac.jp (M.K.)

<sup>2</sup> Department of Chemical Science and Engineering, National Institute of Technology, Miyakonojo College, Miyakonojo 885-8567, Japan; t-noguchi@cc.miyakonojo-nct.ac.jp

\* Correspondence: tokuraku@mmm.muroran-it.ac.jp; Tel.: +81-0143-46-5721

Received: 18 February 2020; Accepted: 11 March 2020; Published: 13 March 2020



**Abstract:** Amyloidosis refers to aggregates of protein that accumulate and are deposited as amyloid fibrils into plaques. When these are detected in organs, they are the main hallmark of Alzheimer's disease, Parkinson's disease, and other related diseases. Recent medical advances have shown that many precursors and proteins can induce amyloidosis even though the mechanism of amyloid aggregation and the relationship of these proteins to amyloidosis remains mostly unclear. In this study, we report the real-time 3D-imaging and inhibition analysis of amyloid  $\beta$  ( $A\beta$ ), tau, and  $\alpha$ -synuclein aggregation utilizing the affinity between quantum dots (QD) and amyloid aggregates. We successfully visualized these amyloid aggregations in real-time using fluorescence microscopy and confocal microscopy simply by adding commercially available QD. The observation by transmission electron microscopy (TEM) showed that QD particles bound to all amyloid fibrils. The 3D-imaging with QD revealed differences between amyloid aggregates composed of different amyloid peptides that could not be detected by TEM. We were also able to quantify the inhibition activities of these proteins by rosmarinic acid, which has high activity for  $A\beta$  aggregation, from fluorescence micrographs as half-maximal effective concentrations. These imaging techniques with QD serve as quick, easy, and powerful tools to understand amyloidosis and to discover drugs for therapies.

**Keywords:** amyloidosis; amyloid  $\beta$ ; tau;  $\alpha$ -synuclein; amyloid aggregation inhibitor; quantum dot; 4D-imaging

## 1. Introduction

Amyloidosis is a condition in which amyloid fibrils, as well as  $\beta$ -sheet structures, accumulate and are deposited extracellularly. Approximately 50 different peptides or proteins associated with amyloid diseases in humans or domestic animals have been reported worldwide [1–4]. Alzheimer's disease (AD), Parkinson's disease (PD), and other amyloidosis-related diseases are induced when misfolded Amyloid  $\beta$  ( $A\beta$ ), tau, and  $\alpha$ -synuclein proteins aggregate in the brain or in other organs and when hyperphosphorylated tau aggregates in neurofibrillary tangles [5–9]. The process of aggregation of these proteins is basically the same as that which forms amyloid fibrils rich in  $\beta$ -sheets. Furthermore, as these proteins aggregate, they can become generic toxins in higher organisms [10–13]. The aggregation of these proteins or peptides are a key step in the pathogenesis of amyloid diseases. Although cryo-electron microscopy has allowed the structure of these proteins to be elucidated and

made available, the mechanism by which these proteins cause amyloid diseases is currently mostly unknown [14,15]. The diversity of amyloid formation may signal why amyloidosis is so difficult to treat with different clinical presentations, even when the same protein or peptide aggregates [16].

In amyloid disease, misfolded aggregation and accumulation of amyloid fibrils, when deposited in organs, constitutes a significant step towards the development of amyloidosis [2]. Various proteins or peptides serve as precursors for the formation of amyloid fibrils. Although effective therapy still currently remains out of reach [16], target therapy and plasma biomarkers are used to prevent and diagnose amyloidosis [17–20]. Therefore, it is important to find an effective compound or therapy to inhibit amyloid aggregation. Among recent research, none has been certified as medicine for the treatment of amyloidosis. Previously, we developed an A $\beta$ -based real-time imaging method with quantum-dot (QD) nanoprobe, which have evolved as highly useful fluorescence probes in biological staining and diagnostics based on confocal and fluorescence microscopy over the past decade [21–23]. QDs are useful for long-term, single-molecule imaging in vitro. For these reasons, QDs could be an excellent tool for real-time monitoring of the aggregation of various amyloid proteins with nonspecific-binding-labeled fibrils. Utilizing this method, we developed a Microliter-Scale High-throughput Screening (MSHTS) system to screen A $\beta$  aggregation inhibitors with QDs [21,24,25]. In this method (Supplementary Figure S1), only 5- $\mu$ L of a sample can be analyzed in a 1536-well plate, and the half-maximal effective concentration (EC<sub>50</sub>) is estimated as an inhibitory activity [25]. Furthermore, we successfully automated the MSHTS system using an auto-work station and demonstrated that this method could be applied to another protein, tau [21]. However, since the conventional MSHTS method requires labeling of the target protein by QDs, the issue of versatility remains unresolved. In the first report, we found that unlabeled QDs were able to bind to A $\beta$  fibrils [25]. Therefore, in this study, to simplify the conventional MSHTS method, we attempted to visualize the 2D and 3D aggregation of various amyloid proteins using nonspecific binding. Consequently, we succeeded in evaluating the aggregation inhibitory activity in each amyloid protein with the novel MSHTS method using nonspecific QD binding.

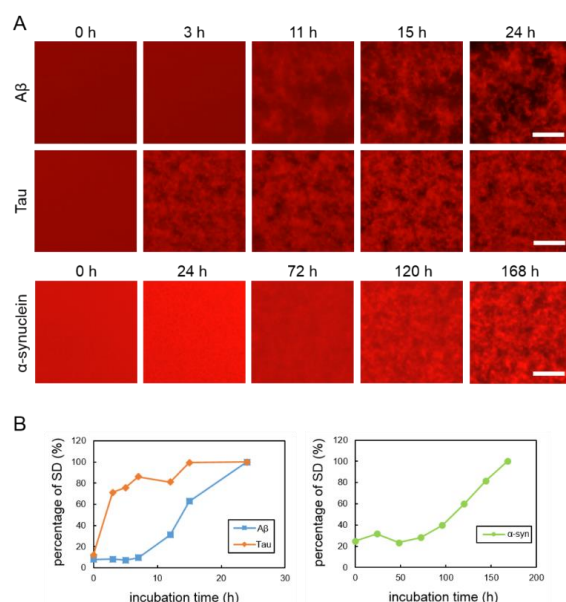
First, we compared the aggregation processes of A $\beta$ , tau, and  $\alpha$ -synuclein using unlabeled QDs and noted that the detailed aggregate structures of their proteins were not exactly the same. The results also showed that  $\alpha$ -synuclein protein aggregation took a longer time to achieve than A $\beta$  and tau. Using confocal microscopy and transmission electron microscopy (TEM), we detected details of their protein structure and analyzed amyloid fibrils after incubation with QD nanoprobe. As previously described [24], an inhibitory compound, rosmarinic acid (RA), was extracted from *Satureja hortensis* (summer savory), a spice belonging to the *Lamiaceae* family. RA has high A $\beta$  aggregation inhibition activity, antioxidant properties, and can also inhibit xanthine oxidase [26]. An aggregation inhibitory test of these proteins using RA was performed, noting that RA inhibited the aggregation of A $\beta$  but not tau. These results indicate that the modified MSHTS method using unlabeled QDs has the potential to be an easy and useful tool to search for aggregation inhibitors of various amyloids.

## 2. Results

### 2.1. Real-Time Imaging of Aggregation Processes of Various Amyloid Proteins

To observe the aggregation and fibrillization of A $\beta$ , tau and  $\alpha$ -synuclein proteins, we performed real-time imaging of each protein bound to the QDs via nonspecific binding using conventional fluorescence microscopy. Each protein sample was mixed with 30 nM Qdot<sup>TM</sup> 605 ITK<sup>TM</sup> amino (PEG) quantum dots (QD605) (Q21501MP; Thermo Fisher Scientific, Waltham, MA, USA) and incubated in a 1536-well plate at 37 °C. This imaging technique was able to directly monitor the physiological aggregation of each amyloid protein simply by adding commercially available QDs. We also confirmed that these amyloid aggregates can be visualized by QD655 (Q21521MP; Thermo Fisher Scientific) (data not shown). A $\beta$  and tau aggregation can be visualized after incubation for 24 h, the ideal period reported in our previously study, which showed that tau protein aggregation was faster than A $\beta$

aggregation [21] (Figure 1A, top and middle panels). Aggregation of  $\alpha$ -synuclein was not observed by only incubating the monomer. Therefore, in this study, aggregation of  $\alpha$ -synuclein was observed by adding  $\alpha$ -synuclein aggregates that had been incubated at 37 °C for five days with stirring, as seeds which can promote  $\alpha$ -synuclein protein aggregation (Supplementary Figure S2). The  $\alpha$ -synuclein aggregation process with 20% seed was observed for 168 h (Figure 1A, bottom panel). A $\beta$  and tau completely aggregated within 24 h, whereas the  $\alpha$ -synuclein protein needed more time to aggregate (168 h), even if the 20% seeds were added. These results indicate that the imaging technique using QDs can be applied to the aggregation of various proteins. In our previous study, we suggest that standard deviation (SD) values of fluorescence intensities of each pixel were correlated with the amount of amyloid protein aggregates [24]. As amyloid aggregations progressed, the variability of the SD values also increased. In this experiment, we compared the changes to SD values of A $\beta$ , tau, and  $\alpha$ -synuclein proteins during incubation (Figure 1B). The individual changes in the curves of the SD values of these three proteins were different. The SD values of A $\beta$  and tau proteins increased more sharply than that of the  $\alpha$ -synuclein protein. The SD value of the  $\alpha$ -synuclein protein increased very slowly over time. The SD values of A $\beta$  and tau peaked at around one day and that of  $\alpha$ -synuclein at around one week. After these protein aggregations and their SD values peaked, the values no longer increased and plateaued.

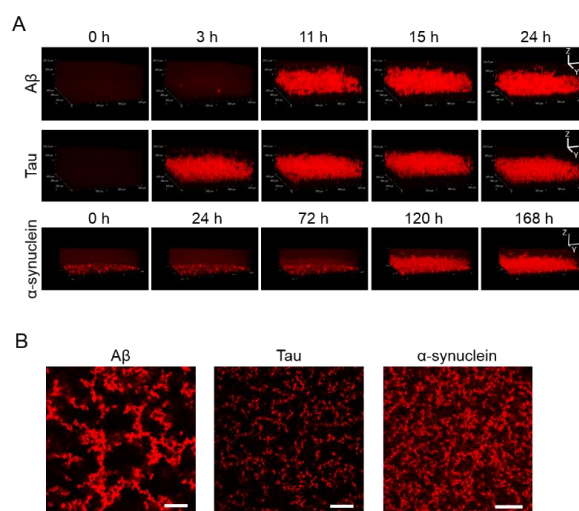


**Figure 1.** (A) Real-time imaging of aggregation processes of various amyloid proteins using QD605. Top: 30- $\mu$ M A $\beta$ , middle: 10- $\mu$ M tau, and bottom: 10- $\mu$ M  $\alpha$ -synuclein with 20% seed. (B) Increase of SD values in each amyloid protein. SD values were determined by ImageJ software using the 2D images of A $\beta$ , tau, and  $\alpha$ -synuclein. Data represent the means from three independent samples. Scale bar = 100  $\mu$ m.

## 2.2. 3D Observation of Aggregation of Various Amyloid Protein

Apart from observing 2D images, 3D aggregations of A $\beta$ , tau, and  $\alpha$ -synuclein proteins after incubation in the 1536-well plate with QD605 were directly observed in real time by confocal microscopy (Figure 2A). By using these QDs, we were able to distinguish the aggregate shapes of A $\beta$ , tau, and  $\alpha$ -synuclein, because the use of an imaging method using a QD without a drying step is suitable for detailed observations of aggregate shapes in solutions. The aggregation speed of each protein in the 3D-imaging was consistent with the 2D-imaging. As time goes on, the thickness of each protein increases due to aggregates. Tau showed the fastest aggregation that the aggregation of thickness can be observed in three h, while  $\alpha$ -synuclein showed slower aggregation and showed the aggregation until 120 h. Furthermore, the XY view images showed that the size and density of each

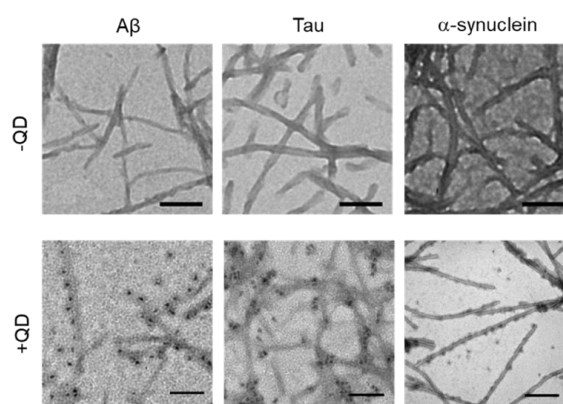
protein aggregation were different (Figure 2B). The increase in thickness of these protein aggregations after incubation can be observed in the XZ view (Figure 2A).



**Figure 2.** (A) 3D observation of the aggregation of Aβ, tau, and α-synuclein. Thirty-micrometer Aβ and 10-μM tau were incubated for 24 h. Ten-micrometer α-synuclein was incubated for 168 h. Sequential 3D reconstruction images of each time point are represented. (B) Image of the slices of aggregation of each protein in panel A. Note that aggregate sizes and densities are different among all three proteins. Scale bar = 100 μm.

### 2.3. Transmission Electron Microscopy Observation of Various Amyloid Fibrils

TEM was used to confirm whether these amyloid proteins (Aβ, tau, and α-synuclein) formed fibrils and to assess whether QDs bound to amyloid fibrils (Figure 3). A low-magnitude image showed that these amyloid proteins had misfolded fibrils in vitro (Figure 3, top panel). A high magnitude image revealed that QDs had bonded evenly along the amyloid fiber (Figure 3, bottom panel). These results are consistent with our previous report [25]. However, these amyloid fibrils are difficult to distinguish, because almost all of them show a linear morphology with a cross structure and irregular length. These fibers that formed can cause amyloidosis and organ dysfunction when they are deposited and accumulate in organs or tissues. These results suggest that QD-based imaging can analyze three-dimensional amyloid aggregation and deposition in vivo in more detail than TEM imaging.

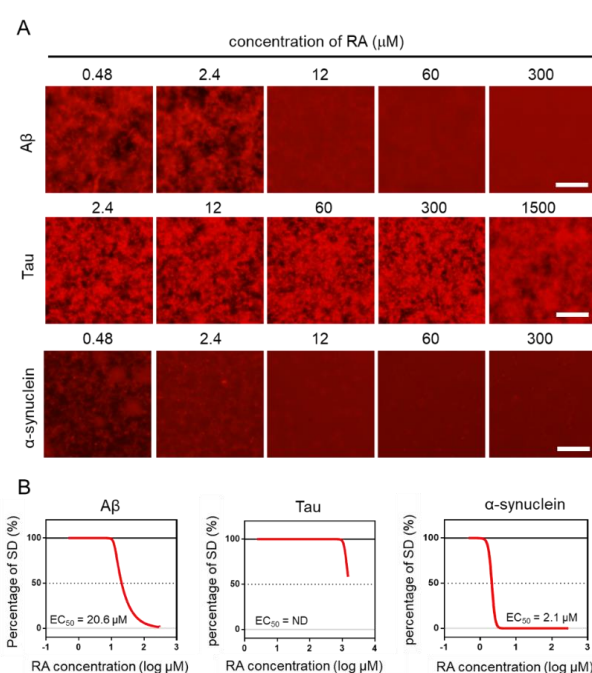


**Figure 3.** Transmission electron microscopy (TEM) observations of various amyloid fibrils of 30-μM Aβ, 10-μM tau, and 10-μM α-synuclein with quantum dot (QD) nanoprobe. Top panel, low-magnitude image of each protein without QDs. Bottom panel, high-magnitude images of each protein with 30-nM QDs. Note that QD nanoprobe, observed as black dots, bind to fibrils in each protein. Bars, 100 nm.



#### 2.4. Effect of RA on the Aggregation of Three Amyloid Proteins

Using the MSHTS system, different concentrations of RA were used to evaluate the inhibitory activity of RA on the aggregation of three amyloid proteins ( $A\beta$ , tau, and  $\alpha$ -synuclein). After incubation at 37 °C, images were captured by fluorescence microscopy (Figure 4A). Two-dimensional images were analyzed by ImageJ software to determine the SD value. The  $EC_{50}$  values of inhibitors were estimated from the inhibition curves (Figure 4B). The  $EC_{50}$  of  $A\beta$ , tau, and  $\alpha$ -synuclein are 20.6  $\mu$ M, ND, and 2.1  $\mu$ M, respectively. RA inhibited the aggregation of  $A\beta$  and  $\alpha$ -synuclein proteins in vitro in a dose-dependent manner, even though their  $EC_{50}$  values were different. However, tau aggregation was not completely inhibited, even when 1500- $\mu$ M RA was used. Although tau aggregates were slightly reduced in the presence of 1500- $\mu$ M RA, the  $EC_{50}$  could not be determined, because the SD value did not fall below 50%. These results indicate that the inhibitory activity of RA increased in the order of  $\alpha$ -synuclein,  $A\beta$ , then tau.



**Figure 4.** Estimation of  $EC_{50}$  by the Microliter-Scale High-throughput Screening (MSHTS) system. (A) Fluorescence image of each amyloid protein treated by rosmarinic acid (RA). (B) Aggregation inhibitory activity of RA for 30- $\mu$ M  $A\beta$ , 10- $\mu$ M tau, and 6- $\mu$ M  $\alpha$ -synuclein. The SD values from the fluorescence images were plotted against several concentrations of inhibitors.  $EC_{50}$  values were calculated from an inhibition curve ( $n = 3$  independent experiments). Scale bar = 100  $\mu$ m.

### 3. Discussion

The global amyloidosis epidemic is a major complex combination of many diseases involving chronic inflammatory and misfolding of proteins that are characterized by the accumulation of amyloid-plaques and neurofibrillary tangles in tissues and organs [27–29]. Although there have been breakthroughs related to the structure and molecular mechanisms of amyloid proteins [30–32], the pathogenic mechanism of amyloidosis is still largely unknown. Over the years, therapy that directly targets amyloid aggregation and deposition in organs or tissues in order to clear it has so far been unsuccessful, and no approved treatment can revert or arrest the progression of this disease [7,33,34]. The procedure of amyloidosis in vivo is very sophisticated, and approximately 50 precursors (protein or peptides) have been reported, with some articles suggesting that pre-amyloid aggregates are the main cause of the induction of amyloidosis [35–38].

In this study, we attempted to elucidate the process of amyloid protein aggregation and assess the effects of RA, an aggregation inhibitor, by using a QD-based imaging and MSHTS system that employs fluorescence and confocal microscopy. In this procedure, we used commercially available QDs without any protein-labeling. The MSHTS system can be analyzed with a 5- $\mu$ L sample volume when a 1536-well plate is used, and inhibitory activity can be estimated as EC<sub>50</sub>. QDs bound to amyloid fibrils, and the intervening space became dark, allowing images of the aggregates to be caught by fluorescence microscopy. The micrographs showed real-time aggregation, and the SD values also increased in a real-time manner. The real-time graphs (Figure 1B) showed a typical kinetic curve for amyloid aggregation that consisted of time lag, growth, and steady state phases, similar to recent 3D volume data that was obtained by confocal microscopy [21,25]. The lag time of Tau aggregation was probably too short to be detected under the MSHTS system. Since the time-dependent data revealed that the aggregation reached a plateau around a certain time, which was from 0 h until the amount of aggregation reaches saturation, the incubation period was fixed to that plateau time in the following screening steps.

Herein, we successfully elucidated the images of real-time aggregation of three amyloid proteins (A $\beta$ , tau, and  $\alpha$ -synuclein) using the MSHTS system coupled to QD nanoprobe [21,24,25]. After these amyloid proteins were incubated in a 1536-well plate at 37 °C, their aggregation over time could be observed by confocal and fluorescence microscopy (Figures 1 and 2). The accompanying SD values also increased concomitantly over the same period of time. The real-time 2D and 3D images showed that A $\beta$ , tau, and  $\alpha$ -synuclein aggregation occurred by 24 h, 24 h, and 168 h, respectively, while SD values reached saturation. In particular, the tau protein began to aggregate earlier than A $\beta$  and  $\alpha$ -synuclein. Moreover, 2D slice images from confocal microscopy (Figure 2) showed that the shapes of aggregates of these proteins were different, but the difference was not significant when observed by TEM (Figure 3).

We also analyzed the structural details of these amyloid protein aggregates by confocal microscopy. An important property of these proteins is that their aggregation structures are very similar, gathering in a spiral-like manner and exhibiting a mesh-like structure without the need for any incubation period. These amyloid fibril aggregations that form in vivo and that are deposited in organs or tissues can induce amyloidosis [39–41]. Based on previous data, we demonstrated that the aggregation and formation of amyloid proteins such as A $\beta$ , tau, and  $\alpha$ -synuclein are almost similar. Three-dimensional aspects related to the detailed structure of amyloid protein aggregation are highly nuanced, and TEM results reveal that amyloid fibrils had a linear morphology with cross structures and irregular length in vitro. The same fibrils can be extracted from diseased tissues or organs, although it cannot be proved whether these amyloid protein aggregation mechanisms are the same. Differences between each protein fiber are difficult to see with the naked eye [21]. Analysis of 3D images of aggregates using QDs may provide new information about the aggregation of different amyloid proteins.

In our previous researches [21,24], we found that the EC<sub>50</sub> were different between the MSHTS system and thioflavin-T (ThT) assay in the A $\beta$  protein, in which the EC<sub>50</sub> of the MSHTS system was higher than ThT, because ThT has the potent of false positive effects in inner filter effects [42]. By contrast, the inner filter effects of the MSHTS system were smaller than ThT, which it adopts as a longer excitation spectrum and quantification from variability data of fluorescence intensity. In this study, we used RA to inhibit these amyloid protein aggregations based on the MSHTS system and calculated their EC<sub>50</sub> values. Our data demonstrates that RA has high inhibitory activity of the aggregation in vitro of A $\beta$  and  $\alpha$ -synuclein. The aggregation inhibitory activity of RA on A $\beta$  and tau was similar to the results using QD-labeled with these peptides [21,24]. This result demonstrated that the aggregation inhibitory activity could be evaluated using a commercially available QD that was not labeled with any peptides.

Although enormous efforts have been made by many researchers, currently there are no effective disease-modifying therapies available. Mutations of the amyloid precursor and some external factors, such as heating, create large challenges for the treatment of amyloidosis [43,44]. At present, some proposals and research involve treatments for amyloidosis based on antibodies, metal ions,

and RNA interference, but none have been certified as medicine for amyloidosis therapy and applied clinically [17,45–48]. In this study, we elucidated 2D and 3D aggregation of three amyloid proteins (A $\beta$ , tau, and  $\alpha$ -synuclein) using QD, which has ability to directly observe the processes of aggregation and inhibition of these amyloid proteins in vitro. These aggregation processes, which involve proteins misfolding in human and animal diseases, are basically the same for these three amyloid proteins. Although these amyloid fibrils are polymorphic and consist of similarly structured proto-filaments in different species or in vivo and in vitro, amyloid proteins adopt highly similar  $\beta$ -arch conformations [15,49]. We used RA to inhibit amyloid protein (A $\beta$  and  $\alpha$ -synuclein) aggregation, showing a high inhibitory activity, but RA had no inhibitory effect on the tau protein. Our findings will be helpful to better understand the pathogenesis of amyloidosis, especially the progression of this disease. With more testing, over time, RA could be used for amyloidosis treatment as an effective medicine. It is our hope that real-time imaging using QDs may serve as an easy and useful tool in the future for the analysis of protein aggregation and to better understand amyloid proteins.

#### 4. Materials and Methods

##### 4.1. Materials

Human amyloid peptide of A $\beta$ <sub>42</sub> (4349-v) and QD605 (Q21501MP) were purchased from the Peptide Institute and Thermo Fisher Scientific, respectively. Mouse tau MBD fragments and  $\alpha$ -synuclein were prepared according to the method described in 5.2. Prepared proteins were stored at  $-80\text{ }^{\circ}\text{C}$  until use.

##### 4.2. Preparation of tau and $\alpha$ -synuclein

The bacterial expression and purification of the tau MBD fragment was carried out as described previously [25,50]. Briefly, the expression plasmids were transformed into *Escherichia coli* (Rosetta™ (DE3) pLys, Burlington, MA, USA), and plasmid expression was induced by 1-mM isopropyl-1-thio- $\beta$ -D-galactopyranoside. The heat-stable fraction of each extract was subjected to successive column chromatographies using a Bio-Scale™ Mini UNOsphere™ S (Bio-rad, Hercules, CA, USA) and a TOYOPEARL® butyl column (Tosoh, Tokyo, Japan). Protein concentration was estimated using the method described by Lowry et al. (1951) [51], using bovine serum albumin (BSA) as the standard. Sodium dodecyl sulfate-polyacrylamide gel electrophoresis (SDS-PAGE) was carried out according to the method of Laemmli et al. (1970) [52].

The preparation of  $\alpha$ -synuclein was performed as described previously with some modifications [50]. Briefly, Rosetta (DE3) cells (Novagen, Madison, MI, USA) harboring pT7-7 asyn WT plasmid (Addgene plasmid 36046; Watertown, MA, USA) were grown in a Luria-Bertani medium supplemented with 100- $\mu\text{g}/\text{mL}$  ampicillin and 34- $\mu\text{g}/\text{mL}$  chloramphenicol at  $37\text{ }^{\circ}\text{C}$ . When OD<sub>600</sub> of the culture reached 0.6, the cells were induced by 0.5-mM isopropyl thio- $\beta$ -D-galactoside for 3 h. Harvested cells were suspended in a buffer (10-mM Tris-HCl (pH 8.0), 1-mM EDTA, and 1-mM phenylmethylsulfonyl fluoride) and were then lysed by sonication for 10 s. After centrifugation at  $10,000\times g$ , the resultant supernatant was boiled for 20 min and recentrifuged at  $16,000\times g$ . Ammonium sulfate was gently added to the supernatant until it reached a saturation of 35%. After centrifugation at  $13,500\times g$ , additional ammonium sulfate was added until the supernatant reached a saturation of 50%. By further centrifuging at  $13,500\times g$ , the pellet was resuspended in 10-mM Tris-HCl (pH 7.4) and dialyzed overnight against 10-mM Tris-HCl (pH 7.4). The dialysate was applied to a HiTrap Q HP column (GE Healthcare Life Sciences, Buckinghamshire, UK), and the protein was eluted using a linear gradient of NaCl (0–500 mM) in 10-mM Tris-HCl (pH 7.4). The fraction containing  $\alpha$ -synuclein was desalted using a PD Midi trap G-25 gel filtration column (GE Healthcare Life Sciences, Marlborough, MA, USA). The concentration of  $\alpha$ -synuclein was determined using the extinction coefficient of  $5600\text{ M}^{-1}\cdot\text{cm}^{-2}$ . Purified  $\alpha$ -synuclein was snap-frozen in liquid N<sub>2</sub> and stored at  $-80\text{ }^{\circ}\text{C}$ .



#### 4.3. Microliter-Scale High-Throughput Screening System

The image was captured with an inverted fluorescence microscope (TE2000, Nikon, Tokyo, Japan) using a 4× objective equipped with a color CCD camera (DP72, Olympus, Tokyo, Japan) according to our previous study method of the MSHTS System [21]. Confocal laser microscopy aggregates in the 1536-well plate were observed by a confocal laser microscope (Nikon C2 Plus, Nikon, Tokyo, Japan) using a 20× objective. Amyloid protein aggregation can be visualized under a fluorescence microscope, and QD605, as well as proteins, were dispersed in samples, showing a red color. Furthermore, we analyzed details of the structure of amyloid aggregation based on confocal microscope imaging. The SD values were correlated with the amount of these amyloid protein aggregation when the thickness of the aggregate was within the range of the depth of focus. We selected 30-μM Aβ, 10-μM tau, and 6-μM α-synuclein as the concentrations, because a wide range of SD values is directly related to the sensitivity of this system.

#### 4.4. Aggregation of Three Amyloid Proteins

In order to visualize α-synuclein aggregates with QD605, several solution conditions were reported in the article [53], but aggregations of the α-synuclein protein cannot be observed by this imaging method using QDs. Thus, we tried to prepare seeds in which an α-synuclein monomer solution was stirred to make aggregates as seeds to promote the α-synuclein aggregation. A 20% seed concentration was the most efficient (Supplementary Figure S2). The 400-μM α-synuclein solution was stirred at 37 °C for 5 days to prepare the seed for this experiment [54]. The α-synuclein sample (total of 20 μL) was prepared as follows: 10-μM α-synuclein with 20% seed and 30-nM QD605; Aβ and tau samples were prepared as described in our previous study [21]. Then, 5 μL of each sample was transferred into a 1536-well plate and centrifuged at 3700 rpm for 5 min at room temperature. After centrifugation, samples were incubated at 37 °C in an air incubator (SIB-35, Sansyo, Tokyo, Japan). Images of the aggregation were observed and captured with a color CCD camera (DP72, Olympus, Tokyo, Japan). Images of Aβ and tau samples were caught at 0 h, 3 h, 11 h, 15 h, and 24 h, while images of α-synuclein samples were caught every 24 h until 168 h. ImageJ software was used to analyze the SD value and draw a time-dependent curve of these amyloid proteins.

#### 4.5. Transmission Electron Microscopy Observation

Aβ, tau, and α-synuclein samples were prepared in a total of 20 μL, the same volume as the MSHTS system, and incubated in PCR tubes at 37 °C. Samples were then deposited in 5-μL aliquots onto 200-mesh copper grids for 10 min and dried with filter paper, then washed with phosphate buffer saline (PBS). After washing, samples were negatively stained twice with 1% phosphotungstic acid for 10 min each time, then washed with PBS after each negative stain. Specimens were examined under an H-7600 transmission electron microscope (Hitachi) at 60 kV.

### 5. Conclusions

In summary, we successfully simplified a conventional MSHTS method using unlabeled QDs and were able to visualize the aggregation of three amyloid proteins: Aβ, tau, and α-synuclein in real time. Furthermore, we evaluated the aggregation inhibitory activity of RA in Aβ and α-synuclein amyloid proteins with the novel MSHTS method using nonspecific QD binding. We hope that this method of evaluation will contribute to the search and discovery of more aggregation inhibitors of various amyloid proteins.

**Supplementary Materials:** The following are available online at <http://www.mdpi.com/1422-0067/21/6/1978/s1>.

**Author Contributions:** Conceptualization: K.T.; methodology: K.T.; software: X.L., K.S., and M.K.; formal analysis: X.L. and M.K.; data curation: X.L., M.K., R.T., T.Q.P.N., and N.G.; writing—original draft preparation: X.L.; writing—review and editing: K.T. and M.K.; and supervision: K.T. All authors have read and agreed to the published version of the manuscript.

**Funding:** This research was funded by The Japan Society for the Promotion of Science (KAKENHI, JP16H03288 grand awarded to K.T.).

**Conflicts of Interest:** The authors declare no conflict of interest.

## References

1. Sipe, J.D.; Benson, M.D.; Buxbaum, J.N.; Ikeda, S.I.; Merlini, G.; Saraiva, M.J.M.; Westermark, P. Amyloid fibril proteins and amyloidosis: Chemical identification and clinical classification International Society of Amyloidosis 2016 Nomenclature Guidelines. *Amyloid* **2016**, *23*, 209–213. [\[CrossRef\]](#)
2. Sipe, J.D.; Benson, M.D.; Buxbaum, J.N.; Ikeda, S.I.; Merlini, G.; Saraiva, M.J.M.; Westermark, P. Amyloid fibril protein nomenclature: 2012 recommendations from the Nomenclature Committee of the International Society of Amyloidosis. *Amyloid* **2012**, *19*, 167–170. [\[CrossRef\]](#)
3. Watanabe, K.; Uchida, K.; Chambers, J.K.; Tei, M.; Shoji, A.; Ushio, N.; Nakayama, H. Experimental Transmission of AA Amyloidosis by Injecting the AA Amyloid Protein Into Interleukin-1 Receptor Antagonist Knockout (IL-1raKO) Mice. *Vet. Pathol.* **2015**, *52*, 505–512. [\[CrossRef\]](#)
4. Sipe, J.D.; Cohen, A.S. Review: History of the amyloid fibril. *J. Struct. Biol.* **2000**, *130*, 88–98. [\[CrossRef\]](#)
5. Howe, H.S. Rheumatoid arthritis—A review. *Ann. Acad. Med. Singap.* **1998**, *27*, 83–88.
6. Ruipérez, V.; Darios, F.; Davletov, B. Alpha-synuclein, lipids and Parkinson's disease. *Prog. Lipid Res.* **2010**, *49*, 420–428. [\[CrossRef\]](#)
7. Selkoe, D.J.; Hardy, J.; Sciences, B.; Hu, N.-W.; Nicoll, A.J.; Zhang, D.; Mably, A.J.; O'Malley, T.; Purro, S.A.; Terry, C.; et al. Amyloid  $\beta$ -Protein Dimers Isolated Directly from Alzheimer Brains Impair Synaptic Plasticity and Memory. *Nat. Med.* **2016**, *7*, 3374.
8. Koo, E.H.; Lansbury, P.T.; Kelly, J.W. Amyloid diseases: Abnormal protein aggregation in neurodegeneration. *Proc. Natl. Acad. Sci. USA* **1999**, *96*, 9989–9990. [\[CrossRef\]](#)
9. Ising, C.; Venegas, C.; Zhang, S.; Scheiblich, H.; Schmidt, S.V.; Vieira-Saecker, A.; Schwartz, S.; Albasset, S.; McManus, R.M.; Tejera, D.; et al. NLRP3 inflammasome activation drives tau pathology. *Nature* **2019**, *575*, 669–673. [\[CrossRef\]](#)
10. Pfeifferkorn, C.M.; Jiang, Z.; Lee, J.C. Biophysics of  $\alpha$ -synuclein membrane interactions. *Biochim. Biophys. Acta Biomembr.* **2012**, *1818*, 162–171. [\[CrossRef\]](#)
11. Baglioni, S.; Casamenti, F.; Bucciantini, M.; Luheshi, L.M.; Taddei, N.; Chiti, F.; Dobson, C.M.; Stefani, M. Prefibrillar amyloid aggregates could be generic toxins in higher organisms. *J. Neurosci.* **2006**, *26*, 8160–8167. [\[CrossRef\]](#)
12. Bucciantini, M. Inherent cytotoxicity of aggregates implies a common origin for protein misfolding diseases. *Nature* **2002**, *416*, 507–511. [\[CrossRef\]](#)
13. Winner, B.; Jappelli, R.; Maji, S.K.; Desplats, P.A.; Boyer, L.; Aigner, S.; Hetzer, C.; Loher, T.; Vilar, M.; Campioni, S.; et al. In vivo demonstration that  $\alpha$ -synuclein oligomers are toxic. *Proc. Natl. Acad. Sci. USA* **2011**, *108*, 4194–4199. [\[CrossRef\]](#)
14. Radamaker, L.; Lin, Y.H.; Annamalai, K.; Huhn, S.; Hegenbart, U.; Schönland, S.O.; Fritz, G.; Schmidt, M.; Fändrich, M. Cryo-EM structure of a light chain-derived amyloid fibril from a patient with systemic AL amyloidosis. *Nat. Commun.* **2019**, *10*, 1–8. [\[CrossRef\]](#)
15. Liberta, F.; Loerch, S.; Rennegarbe, M.; Schierhorn, A.; Westermark, P.; Westermark, G.T.; Hazenberg, B.P.C.; Grigorieff, N.; Fändrich, M.; Schmidt, M. Cryo-EM fibril structures from systemic AA amyloidosis reveal the species complementarity of pathological amyloids. *Nat. Commun.* **2019**, *10*, 1–12.
16. Iadanza, M.G.; Jackson, M.P.; Hewitt, E.W.; Ranson, N.A.; Radford, S.E. A new era for understanding amyloid structures and disease. *Nat. Rev. Mol. Cell Biol.* **2018**, *19*, 755–773. [\[CrossRef\]](#)
17. Sevigny, J.; Chiao, P.; Bussière, T.; Weinreb, P.H.; Williams, L.; Maier, M.; Dunstan, R.; Salloway, S.; Chen, T.; Ling, Y.; et al. The antibody aducanumab reduces A $\beta$  plaques in Alzheimer's disease. *Nature* **2016**, *537*, 50–56. [\[CrossRef\]](#)
18. Nakamura, A.; Kaneko, N.; Villemagne, V.L.; Kato, T.; Doecke, J.; Doré, V.; Fowler, C.; Li, Q.X.; Martins, R.; Rowe, C.; et al. High performance plasma amyloid- $\beta$  biomarkers for Alzheimer's disease. *Nature* **2018**, *554*, 249–254. [\[CrossRef\]](#)

19. Ishihara, S.; Tada, Y.; Kawashima, K.; Kataoka, M.; Sonoyama, H.; Yamashita, N.; Oka, A.; Kusunoki, R.; Fukuba, N.; Mishima, Y.; et al. Serum amyloid A level correlated with endoscopic findings in patients with Crohn's disease—Possible biomarker for evaluating mucosal healing. *Dig. Liver Dis.* **2018**, *50*, 553–558. [\[CrossRef\]](#)
20. Strømmland, Ø.; Kakubec, M.; Halskau, Ø. Detection of mis-folded protein aggregates from a clinical perspective. *J. Clin. Transl. Res.* **2016**, *1*, 11–26.
21. Sasaki, R.; Tainaka, R.; Ando, Y.; Hashi, Y.; Deepak, H.V.; Suga, Y.; Murai, Y.; Anetai, M.; Monde, K.; Ohta, K.; et al. An automated microliter-scale high-throughput screening system (MSHTS) for real-time monitoring of protein aggregation using quantum-dot nanoprobe. *Sci. Rep.* **2019**, *9*, 1–9.
22. Chan, W.C.W.; Nie, S. Quantum dot bioconjugates for ultrasensitive nonisotopic detection. *Science* **1998**, *281*, 2016–2018. [\[CrossRef\]](#)
23. Bruchez, M.; Moronne, M.; Gin, P.; Weiss, S.; Alivisatos, A.P. Semiconductor nanocrystals as fluorescent biological labels. *Science* **1998**, *281*, 2013–2016. [\[CrossRef\]](#)
24. Ishigaki, Y.; Tanaka, H.; Akama, H.; Ogara, T.; Uwai, K.; Tokuraku, K. A Microliter-Scale High-throughput Screening System with Quantum-Dot Nanoprobes for Amyloid- $\beta$  Aggregation Inhibitors. *PLoS ONE* **2013**, *8*, e72992. [\[CrossRef\]](#)
25. Tokuraku, K.; Marquardt, M.; Ikezu, T. Real-time imaging and quantification of amyloid- $\beta$  peptide aggregates by novel quantum-dot nanoprobe. *PLoS ONE* **2009**, *4*, e8492. [\[CrossRef\]](#)
26. Taguchi, R.; Hatayama, K.; Takahashi, T.; Hayashi, T.; Sato, Y.; Sato, D.; Ohta, K.; Nakano, H.; Seki, C.; Endo, Y.; et al. Structure–activity relations of rosmarinic acid derivatives for the amyloid  $\beta$  aggregation inhibition and antioxidant properties. *Eur. J. Med. Chem.* **2017**, *138*, 1066–1075. [\[CrossRef\]](#)
27. Lu, J.; Yu, Y.; Zhu, I.; Cheng, Y.; Sun, P.D. Structural mechanism of serum amyloid A-mediated inflammatory amyloidosis. *Proc. Natl. Acad. Sci. USA* **2014**, *111*, 5189–5194. [\[CrossRef\]](#)
28. Bhat, A.; Selmi, C.; Naguwa, S.M.; Cheema, G.S.; Gershwin, M.E. Current concepts on the immunopathology of amyloidosis. *Clin. Rev. Allergy Immunol.* **2010**, *38*, 97–106. [\[CrossRef\]](#)
29. Jayaraman, S.; Gantz, D.L.; Haupt, C.; Gursky, O. Serum amyloid A forms stable oligomers that disrupt vesicles at lysosomal pH and contribute to the pathogenesis of reactive amyloidosis. *Proc. Natl. Acad. Sci. USA* **2017**, *114*, E6507–E6515. [\[CrossRef\]](#)
30. Rodriguez, J.A.; Ivanova, M.I.; Sawaya, M.R.; Cascio, D.; Reyes, F.E.; Shi, D.; Sangwan, S.; Guenther, E.L.; Johnson, L.M.; Zhang, M.; et al. Structure of the toxic core of  $\alpha$ -synuclein from invisible crystals. *Nature* **2015**, *525*, 486–490. [\[CrossRef\]](#)
31. Fitzpatrick, A.W.P.; Falcon, B.; He, S.; Murzin, A.G.; Murshudov, G.; Garringer, H.J.; Crowther, R.A.; Ghetti, B.; Goedert, M.; Scheres, S.H.W. Cryo-EM structures of tau filaments from Alzheimer's disease. *Nature* **2017**, *547*, 185–190. [\[CrossRef\]](#) [\[PubMed\]](#)
32. Merlini, G.; Bellotti, V. Molecular mechanisms of amyloidosis. *N. Engl. J. Med.* **2003**, *349*, 583–596. [\[CrossRef\]](#) [\[PubMed\]](#)
33. Van der Kant, R.; Goldstein, L.S.B.; Ossenkoppele, R. Amyloid- $\beta$ -independent regulators of tau pathology in Alzheimer disease. *Nat. Rev. Neurosci.* **2019**, 1–15. [\[CrossRef\]](#) [\[PubMed\]](#)
34. Long, J.M.; Holtzman, D.M. Alzheimer Disease: An Update on Pathobiology and Treatment Strategies. *Cell* **2019**, *179*, 312–339. [\[CrossRef\]](#) [\[PubMed\]](#)
35. Bernini, F.; Malferrari, D.; Pignataro, M.; Bortolotti, C.A.; Di Rocco, G.; Lancellotti, L.; Brigatti, M.F.; Kaye, R.; Borsari, M.; Del Monte, F.; et al. Pre-amyloid oligomers budding: A metastatic mechanism of proteotoxicity. *Sci. Rep.* **2016**, *6*, 1–11. [\[CrossRef\]](#)
36. Tijms, B.M.; Vermunt, L.; Zwan, M.D.; van Harten, A.C.; van der Flier, W.M.; Teunissen, C.E.; Scheltens, P.; Visser, P.J. Pre-amyloid stage of Alzheimer's disease in cognitively normal individuals. *Ann. Clin. Transl. Neurol.* **2018**, *5*, 1037–1047. [\[CrossRef\]](#)
37. Reixach, N.; Deechongkit, S.; Jiang, X.; Kelly, J.W.; Buxbaum, J.N. Tissue damage in the amyloidoses: Transthyretin monomers and nonnative oligomers are the major cytotoxic species in tissue culture. *Proc. Natl. Acad. Sci. USA* **2004**, *101*, 2817–2822. [\[CrossRef\]](#)
38. Levine, H. Soluble multimeric Alzheimer  $\beta$ (1–40) pre-amyloid complexes in dilute solution. *Neurobiol. Aging* **1995**, *16*, 755–764. [\[CrossRef\]](#)
39. Lundmark, K.; Westermark, G.T.; Nyström, S.; Murphy, C.L.; Solomon, A.; Westermark, P. Transmissibility of systemic amyloidosis by a prion-like mechanism. *Proc. Natl. Acad. Sci. USA* **2002**, *99*, 6979–6984. [\[CrossRef\]](#)

40. Glabe, C.G. Common mechanisms of amyloid oligomer pathogenesis in degenerative disease. *Neurobiol. Aging* **2006**, *27*, 570–575. [[CrossRef](#)]
41. Qiang, W.; Yau, W.; Lu, J.; Collinge, J.; Tycko, R. Structural variation in amyloid- $\beta$  fibrils from Alzheimer's disease clinical subtypes. *Nature* **2017**, *541*, 217–221. [[CrossRef](#)] [[PubMed](#)]
42. Jameson, L.P.; Smith, N.W.; Dzyuba, S.V. Dye-binding assays for evaluation of the effects of small molecule inhibitors on amyloid (A $\beta$ ) self-assembly. *ACS Chem. Neurosci.* **2012**, *3*, 807–819. [[CrossRef](#)] [[PubMed](#)]
43. Van Giau, V.; Bagyinszky, E.; Youn, Y.C.; An, S.S.A.; Kim, S.Y. APP, PSEN1, and PSEN2 mutations in asian patients with early-onset alzheimer disease. *Int. J. Mol. Sci.* **2019**, *20*, E4757. [[CrossRef](#)] [[PubMed](#)]
44. Ogawa, S.; Murakami, T.; Inoshima, Y.; Ishiguro, N. Effect of heating on the stability of amyloid A (AA) fibrils and the intra- and cross-species transmission of AA amyloidosis. *Amyloid* **2015**, *22*, 236–243. [[CrossRef](#)] [[PubMed](#)]
45. Blesl, A.; Rainer, F.; Pollheimer, M.; Kump, P.; Durchschein, F.; Wenzl, H.; Eller, K.; Krisper, P.; Petritsch, W.; Högenauer, C. Successful Pregnancies After Regression of AA Amyloidosis by Anti-inflammatory Therapy in Chronic Active Crohn's Disease. *Dig. Dis. Sci.* **2019**, *20*, 4757. [[CrossRef](#)] [[PubMed](#)]
46. Sperry, B.W.; Tang, W.H.W. Amyloid heart disease: Genetics translated into disease-modifying therapy. *Heart* **2017**, *103*, 812–817. [[CrossRef](#)]
47. Garber, K. Alnylam's RNAi therapy targets amyloid disease. *Nat. Biotechnol.* **2015**, *33*, 577. [[CrossRef](#)]
48. Moreira, G.G.; Cristóvão, J.S.; Torres, V.M.; Carapeto, A.P.; Rodrigues, M.S.; Landrieu, I.; Cordeiro, C.; Gomes, C.M. Zinc Binding to Tau Influences Aggregation Kinetics and Oligomer Distribution. *Int. J. Mol. Sci.* **2019**, *20*, 5979. [[CrossRef](#)]
49. Kollmer, M.; Close, W.; Funk, L.; Rasmussen, J.; Bsoul, A.; Schierhorn, A.; Schmidt, M.; Sigurdson, C.J.; Jucker, M.; Fändrich, M. Cryo-EM structure and polymorphism of A $\beta$  amyloid fibrils purified from Alzheimer's brain tissue. *Nat. Commun.* **2019**, *10*, 1–8. [[CrossRef](#)]
50. Sidhu, A.; Segers-Nolten, I.; Subramaniam, V. Solution conditions define morphological homogeneity of  $\alpha$ -synuclein fibrils. *Biochim. Biophys. Acta Proteins Proteom.* **2014**, *1844*, 2127–2134. [[CrossRef](#)]
51. Lowry, O.H.; Rosebrough, N.J.; Farr, A.L.; Randall, R.J. Protein measurement with the Folin phenol reagent. *J. Biol. Chem.* **1951**, *193*, 265–275. [[PubMed](#)]
52. Laemmli, U.K. Cleavage of structural proteins during the assembly of the head of bacteriophage T4. *Nature* **1970**, *227*, 680–685. [[CrossRef](#)] [[PubMed](#)]
53. Hoyer, W.; Antony, T.; Cherny, D.; Heim, G.; Jovin, T.M.; Subramaniam, V. Dependence of  $\alpha$ -synuclein aggregate morphology on solution conditions. *J. Mol. Biol.* **2002**, *322*, 383–393. [[CrossRef](#)]
54. Buell, A.K.; Galvagnion, C.; Gaspar, R.; Sparr, E.; Vendruscolo, M.; Knowles, T.P.J.; Linse, S.; Dobson, C.M. Solution conditions determine the relative importance of nucleation and growth processes in  $\alpha$ -synuclein aggregation. *Proc. Natl. Acad. Sci. USA* **2014**, *111*, 7671–7676. [[CrossRef](#)]

